



# CHESHIRE HIGH SCHOOL

## Class of 2023-24 SCHOOL PROFILE

525 South Main Street  
Cheshire, Connecticut 06410  
School Counseling Phone: 203-250-2556  
School Counseling Fax: 203-250-2573  
[www.cheshire.k12.ct.us/chs](http://www.cheshire.k12.ct.us/chs)

CEEB/ACT Code 070100

---

### School Officials & School Counseling Staff

#### Principal

Dr. Mary Joscelyn-Gadd  
[mgadd@cheshire.k12.ct.us](mailto:mgadd@cheshire.k12.ct.us)

#### Administration

Marie Broadway, *Supervisor of Special Education*  
[mbroadway@cheshire.k12.ct.us](mailto:mbroadway@cheshire.k12.ct.us)

Kristin Pelz, *Assistant Principal*  
[kpelz@cheshire.k12.ct.us](mailto:kpelz@cheshire.k12.ct.us)

John Perosino, *Athletic Director*  
[jperosino@cheshire.k12.ct.us](mailto:jperosino@cheshire.k12.ct.us)

Dr. Maureen Reed, *Assistant Principal*  
[mreed@cheshire.k12.ct.us](mailto:mreed@cheshire.k12.ct.us)

Daniel Tartarelli, *Assistant Principal*  
[dtartarelli@cheshire.k12.ct.us](mailto:dtartarelli@cheshire.k12.ct.us)

#### Main Office

203-250-2511

#### Counselors

Michelle Catucci, *Chairperson*  
[mcatucci@cheshire.k12.ct.us](mailto:mcatucci@cheshire.k12.ct.us)

Miranda Brown, [mbrown1@cheshire.k12.ct.us](mailto:mbrown1@cheshire.k12.ct.us)

Marc Dalke, [mdalke@cheshire.k12.ct.us](mailto:mdalke@cheshire.k12.ct.us)

Alyssa Leclair, [aleclair@cheshire.k12.ct.us](mailto:aleclair@cheshire.k12.ct.us)

Bonnie McDonald, [bmcdonald@cheshire.k12.ct.us](mailto:bmcdonald@cheshire.k12.ct.us)

Jenna Moyer, [jmoyer@cheshire.k12.ct.us](mailto:jmoyer@cheshire.k12.ct.us)

Michelle Piazza, [mpiazza@cheshire.k12.ct.us](mailto:mpiazza@cheshire.k12.ct.us)

Lindsay DeAngelo, *College & Career Counselor*  
[ldeangelo1@cheshire.k12.ct.us](mailto:ldeangelo1@cheshire.k12.ct.us)

#### Transcript Office

Richard Lennon, [rlennon@cheshire.k12.ct.us](mailto:rlennon@cheshire.k12.ct.us)

#### Administrative Assistants

Donna Loiselle, [dloiselle@cheshire.k12.ct.us](mailto:dloiselle@cheshire.k12.ct.us)

Rebekah Zimnoch, [rzimnoch@cheshire.k12.ct.us](mailto:rzimnoch@cheshire.k12.ct.us)

---

### Vision of the Graduate

The Cheshire Public Schools prepares students to become lifelong learners who can adapt to a rapidly changing society. We believe in the capacity of every student to succeed academically, socially, and emotionally. Through the continuous development of complex skills and knowledge, students will acquire the qualities and characteristics of successful and engaged learners. Graduates of the Cheshire Public Schools will be ready to positively and successfully influence our global society. These skills, knowledge, and characteristics are attained through the satisfactory completion of the content of each course, and in the context of applying these skills across disciplines and in real-world applications throughout every student's educational experience. The skills, knowledge, and characteristics in the vision are described in the following ways: Student as Thinker/Learner (Self), Student as Collaborator (Others), and Student as Community Contributor (World).

### Cheshire Performance Standards

Complex Thinker      Creative Thinker      Self-Directed Learner  
Effective Communicator      Collaborative/Cooperative Learner      Community Contributor

## Cheshire & CHS Highlights

Spanning 34 square miles, Cheshire Public Schools (CPS) serves the educational needs of over 4,200 children K-12. Currently, the district consists of one high school, one middle school and 5 elementary schools utilizing a K-6, 7-8, 9-12 grade-level configuration. Cheshire was designated as one of the **top 100 small towns** in the United States by *Money Magazine*. Cheshire High School (CHS) is a comprehensive four-year public high school enrolling 1,250 students in grades 9-12 and was ranked by Newsweek Magazine as one of the **top 500 schools in America**. The CHS student body consists of a population that is 75% white, 11% Asian, 8% Hispanic or Latino, and 4% Black or African American. CHS is accredited by the **New England Association of Schools and Colleges** and holds membership in the College Board and the National Association for College Admission Counseling. Students show proficiency in the Cheshire Performance Standards in the classroom, in their Mastery Based Performance Assessment project, and a variety of other ways, including:

- ★ CHS offers 29 athletic teams, 26 service organizations, 23 clubs, 18 academic clubs, 18 music and dramatics clubs/ensembles, 4 honors societies, and 3 publications
- ★ In 2022-23, CHS Athletics won 9 Southern Connecticut Conference (SCC) titles, including every girls team in the fall, and was the first high school in the state with a record that high; as well as won state titles in Boys Golf, Boys Lacrosse, and Girls Tennis Singles.
- ★ 93% of students participate in at least 1 extracurricular activity
- ★ 98% of students in grades 11 & 12 take two or more courses in AP, Dual Enrollment, CTE, and/or workplace experience courses

### Grading System

A+	100 - 97	A	96 - 93	A-	92 - 90
B+	89 - 87	B	86 - 83	B-	82 - 80
C+	79 - 77	C	76 - 73	C-	73 - 70
D+	69 - 67	D	66 - 63	D-	62 - 60
F	<60	I	Incomplete	N	Loss of Credit

### GPA Information

An official weighted GPA is calculated at the end of each semester. CHS does not report class rank. The student's weighted GPA is reported on the transcript using the following scale:

AP/DE/ECE Credit	5.0
Honors	4.5
Regular	4.0

### Grading Policies During COVID-19

Cheshire Public Schools moved to remote learning on March 18, 2020 in response to COVID-19. Students participated in all classes virtually every day for the remainder of the 2019-20 school year. Students' work was graded and students still earned a final letter grade for all courses. For the 2020-21 school year, students were divided into two cohorts in a hybrid two day in-person/three day remote collegiate model. Full remote learning was available upon request. Grading continued as traditional letter grading for all courses regardless of instructional method. CHS returned to a regular block schedule with traditional letter grading for all students in the 2021-22 school year.

### Curriculum

The academic program is organized in a block schedule. Eight credits per year is the maximum course load; 6.5 credits is the minimum course load. Students attend four block classes daily; each block class meets every other day. Advanced Placement, Dual Enrollment, Honors, and College Prep level courses are offered in English, Fine Arts, Science (with lab), Mathematics, Social Studies, Business, CTE, and World Languages. Students are advised as to the most appropriate course levels on the basis of achievement, teacher/counselor recommendations, and students' post-secondary plans. Students have opportunities for Career and Technical Education Pathways, Independent Study, and Internship. Additionally, students have access to 44 College Credit opportunities; 18 offer AP credit only; 11 offer either AP or UCONN Early College Experience (ECE) credit; 6 offer UCONN/ECE credit only; and 8 offer Dual Enrollment college credit from CT State Community Colleges. Many students take more than one college credit bearing course.

	Honors Courses	AP Courses	AP/ECE courses	ECE Courses	DE Courses
Number of enrollments for 2023-24 (students may be enrolled in more than one course)	2315	624	169	151	118

We offer the following advanced courses to meet the individual needs and interests of our students:

AP Courses	AP/ECE courses	ECE Courses	DE Courses
AP Drawing, AP Language & Composition, AP Research, AP Seminar, AP Calculus AB, AP Calculus BC, AP Computer Science A, AP Computer Science Principles, AP Pre-Calculus, AP Statistics, AP Music Theory & Ear Training, AP Chemistry, AP Comparative Government, AP Human Geography, AP Psychology, AP US Government & Politics, AP US History, AP Latin Virgil & Caesar	AP Macroeconomics, AP Microeconomics, AP Literature & Composition, AP Biology, AP Environmental Science, AP Physics 1 & 2, AP Physics C, AP European History, AP French Language, AP German Language, AP Spanish Language	ECE Health & Education in Urban Settings, ECE Lifespan Development, ECE British Literature, ECE If You Love It, Teach It, ECE Elementary Discrete Mathematics, ECE Human Rights & The Law	DE Accounting I, DE Accounting II, DE Advanced Personal Finance, DE Introduction to Business, DE Advanced CNC Manufacturing, DE Digital Media Foundations, DE Manufacturing Fundamentals, DE Manufacturing Machining Principles

### Advanced Placement Results

In May 2023, **289 students** took AP Exams  
 A total of **529 exams** were taken in **24 subjects**.  
**87%** of the AP Exams received scores of **3 or higher**.

### AP Scholars

**47 AP Scholars with Distinction**  
**24 AP Scholars with Honors**  
**47 AP Scholars**

### Graduation Requirements

Students need **25 credits** to graduate

#### 9 credits in Humanities

- 4 English
- 3 Social Studies (including Civics & US History)
- 1 Fine Arts
- 1 Humanities Elective

#### 9 credits in STEM

- 3 Mathematics
- 3 Science
- 2 Business or CTE (including Personal Finance)
- 1 STEM elective

1 credit in Physical Education & Wellness

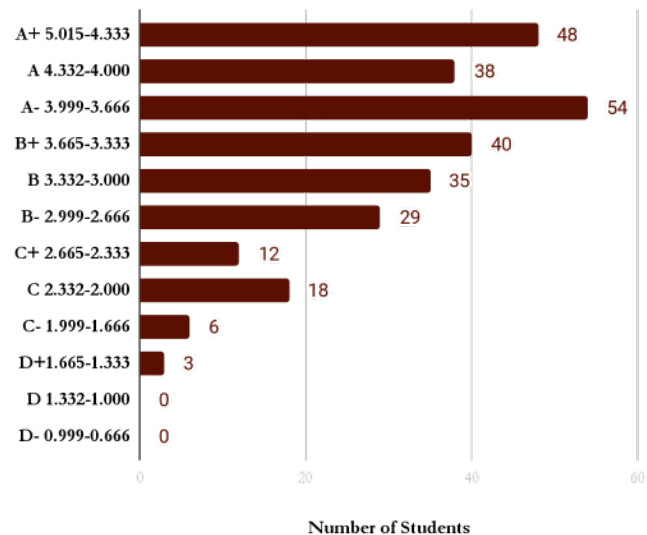
1 credit in Health & Safety

1 credit in World Language

3 credits in Electives

1 credit for Mastery Based Performance Assessment

### Class of 2024 (283 students) 6th Semester GPA Distribution



### SAT School Day Results

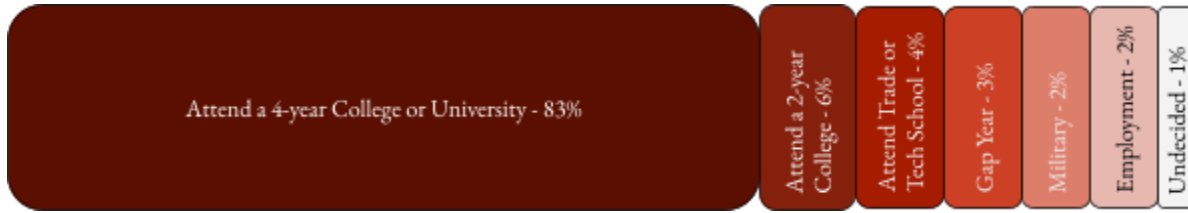
SAT Scores (Mean) - Class of 2024  
 282 students took the test

	Cheshire	State	Benchmark	% CHS Met Benchmark
<b>ERW</b>	544	493	480	71%
<b>Math</b>	583	482	520	52%

### National Merit Scholarship Program

	Finalists	Semi-Finalists	Commended Students
Class of 2023	4	4	9
Class of 2022	5	5	14
Class of 2021	2	2	4
Class of 2020	6	6	8
Class of 2019	6	6	9

## Post-Secondary Plans For the Class of 2023



## Schools Attended by Graduates from the Class of 2023

Albertus Magnus College	Manhattan College	United States Military Academy
American University	Marist College	University of Arkansas
Bentley University	Marymount University	University of California-Davis
Binghamton University	Massachusetts College of Art and Design	University of California-San Diego
Boston College	Merrimack College	University of California-Santa Barbara
Boston University	Naugatuck Valley Community College	University of Connecticut
Bryant University	New York University	University of Connecticut-Waterbury Campus
Bryn Mawr College	Nichols College	University of Delaware
Bucknell University	Northeastern University	University of Florida
Central Connecticut State University	Oberlin College	University of Hartford
Central Maine Community College	Ohio State University-Main Campus	University of Maryland-College Park
Clark University	Pace University, New York City Campus	University of Massachusetts-Amherst
Clarkson University	Pennsylvania State University-Penn State Main Campus	University of New Hampshire-Main Campus
Clemson University	Plymouth State University	University of New Haven
Coastal Carolina University	Purdue University-Main Campus	University of North Carolina Wilmington
College of Charleston	Quinnipiac University	University of Pittsburgh-Pittsburgh Campus
College of the Holy Cross	Regis College	University of Rhode Island
Construction Education Center	Rensselaer Polytechnic Institute	University of Saint Joseph
Cornell University	Rice University	University of South Carolina-Columbia
Curry College	Rivier University	University of Toronto
Eastern Connecticut State University	Roger Williams University	University of Vermont
Elon University	Sacred Heart University	University of Virginia-Main Campus
Endicott College	Saint Michael's College	Vassar College
Fairfield University	Salem State University	Vermont Technical College (Please see the profile for Vermont State University)
Flagler College	Salve Regina University	Villanova University
Florida Gulf Coast University	Seton Hall University	Virginia Tech
Fordham University	Skidmore College	Wagner College
Franklin Pierce University	Southern Connecticut State University	Wentworth Institute of Technology
Gateway Community College	Southern New Hampshire University	Wesleyan University
Georgetown University	Springfield College	West Virginia University
Georgia Institute of Technology-Main Campus	Stockton University	Western Connecticut State University
Haverford College	Stonehill College	Western New England University
Hofstra University	Suffolk University	Worcester Polytechnic Institute
Indiana University-Bloomington	The College of Saint Rose	Yale University
Ithaca College	The University of Alabama	
Long Island University - Post	The University of British Columbia	
Louisiana State University	The University of Tampa	
Loyola University Maryland	Tunxis Community College	